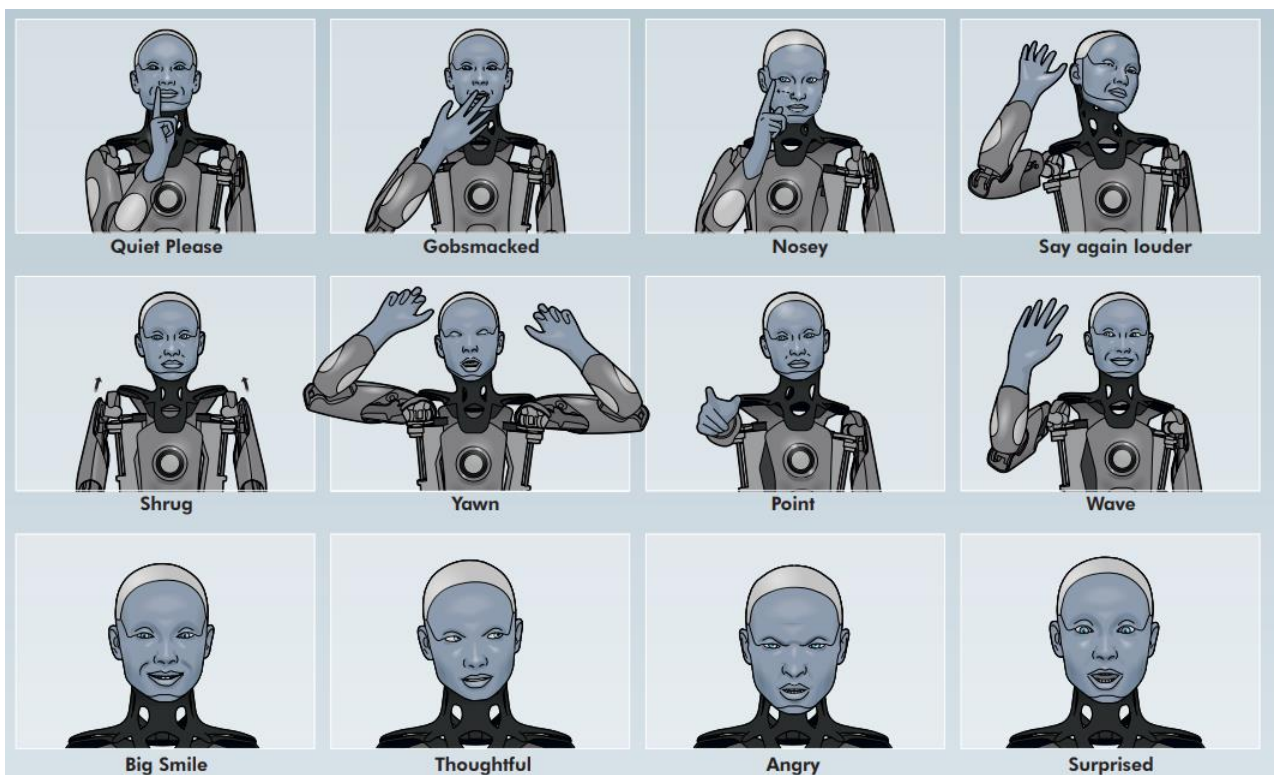
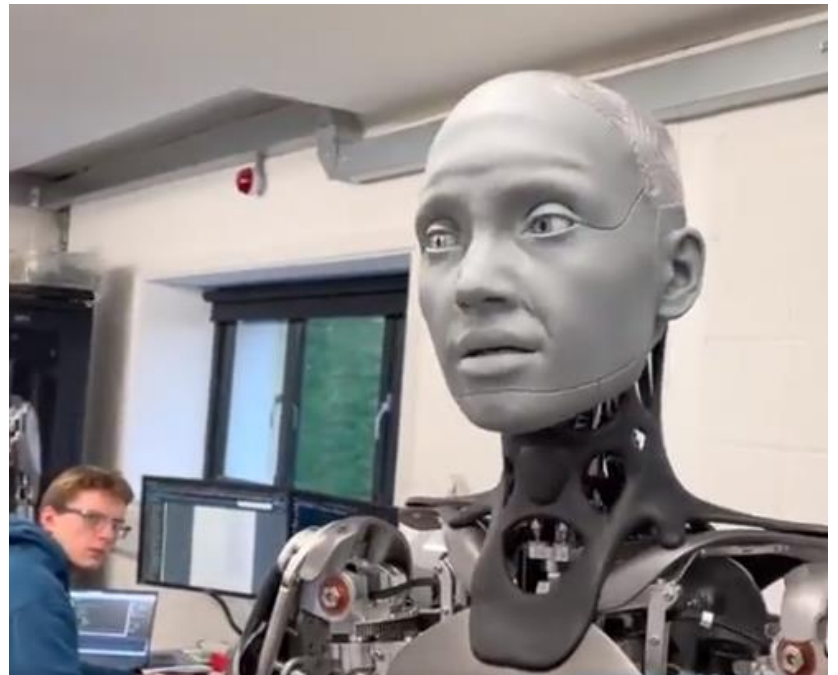


## Ameca Takes “Humanoid Robot” to the Next Level

ENGINEERED  
ARTS

[Ameca](#) is said to be the world’s most advanced humanoid robot. CES attendees have the unique opportunity to view and interact with Ameca up close. This robot looks like a person, with [facial features that move and flex](#) to indicate expressions and mimic emotion and eyes that accurately track movement. [Engineered Arts](#) designed Ameca with as realistic facial features as possible to help scientists and engineers study and improve human-robot interactions. People connect by reading facial cues, so having a robot with life-like expressions and responses is expected to be beneficial in hospital and hospitality uses where communication interactions are integral to success.



Hardware and software is modular so it is easy to upgrade. All modules run independently, allowing someone to purchase just an arm or head, instead of the full robot. Ameca hardware is built on Mesmer technology. All of their robots run on Tritium software framework which was developed to maximize the hardware performance. Images from the eye cameras are processed using [TensorFlow](#).

Engineered Arts sees the main purpose of Ameca as a platform for developing AI, “We love designing and building robots, we’ll leave it to you and all the other amazing (naturally intelligent) brains out there to create the AI and machine learning algorithms and see how far we can progress the technology together.”

At this point in development, Ameca can stand and move its arms but not walk. Ameca weighs 108lbs and is slightly over 6’ tall. Ameca is the culmination of 15 years of work, and one robot costs over \$133,000. Engineered Arts designs and manufactures this and other entertainment robots for science centers, theme parks, and businesses.

